



1
HOTEL
mayfair

GATHER AT 1
MEETING & EVENTS

2025



CAPACITY CHART

Event room	Size	Dimensions	Boardroom or Dinner (with Screen)	Boardroom or Dinner (without Screen)	Cabaret (8 per table)	Classroom	Banquet Rounds (10 per table)	Banquet two long tables side by side	U-shape	Hollow Square	Theatre	Reception
FOXTAIL	32 SQM	5.99 X 5.21 M	10	10	8	10	10	-	12	15	20	25
SWEET REED	40 SQM	5.82 X 7.40 M	11	12	16	15	20	28	18	24	30	30
FIELD WOOD	43 SQM	7.25 X 6.12 M	11	12	16	15	20	28	18	24	26	30
CLOVER	42 SQM	6.26 X 7.25 M	11	12	16	15	20	28	18	24	26	30
WILD OAT	26 SQM	4.30 X 6.04 M	10	10	-	-	-	-	-	-	-	-
FOXTAIL SWEET REED	65 SQM	5.21 X 12.51 M	24	26	32	25	40	-	27	24	70	60
FIELD WOOD CLOVER	87 SQM	7.25 X 12.00 M	-	-	28	-	40	-	-	-	50	60
MEADOW	158 SQM	16.75 X 12.51 M	28	30	64	30	80	72	35	40	100	150
DOVETALE RESTAURANT & TERRACE	332.1 SQM		90	90	-	-	-	-	-	-	-	275
DOVETALE TERRACE	95.7 SQM		40	40	-	-	-	-	-	-	-	80
DOVER YARD BAR	164.7 SQM		-	-	-	-	-	-	-	-	-	175
NEIGHBOURS CAFE	63.2 SQM		-	-	-	-	-	-	-	-	-	30
NIGHTINGALE	46 SQM		22	22	-	-	-	-	-	-	-	60
PICADILLY GREENHOUSE SUITE (826)	82 SQM		-	-	-	-	-	-	-	-	-	30
DOVER TERRACE SUITE (726)	142 SQM		-	-	-	-	-	-	-	-	-	30
GARDEN TERRACE SUITE (710)	174 SQM		-	-	-	-	-	-	-	-	-	15
GREEN PARK PENTHOUSE (717)	274 SQM		26	26	28	-	30	-	-	-	-	60

Events booked in Signature suites will require overnight hold prior and post (subject to event timings) with check-in at 3.00pm and check-out at 12.00 Noon



SOCIALISE AT 1

CORPORATE EVENTS AND MEETINGS

Ensure your meeting is both productive and memorable with our planning services. We can accommodate high-level board meetings, multi-day conferences, networking events and more.

CELEBRATIONS

Celebrate life's milestone events including birthdays, engagements, anniversaries, showers, rehearsal dinners, private dinner parties and more. We'll find a reason to celebrate with something special for everyone.

WEDDINGS

Host a beautiful ceremony and dinner to celebrate your perfect union in an unforgettable atmosphere.

SOCIAL EVENTS

Your one-of-a-kind event fits perfectly in our unique spaces, from product launches to runway shows, fundraising events, panel discussions, film shoots and more.

PRIVATE DINING

Our catering team at 1 Hotel Mayfair will bring your private dining experience to the next level with custom planning services and delicious food.

SHOWROOMS

Transform our first floor event spaces into product showrooms or plan a memorable brand launch in one of our signature suites. Our flexible spaces will provide a nature-inspired canvas to create an unforgettable experience for your guests.



EVENT SPACES

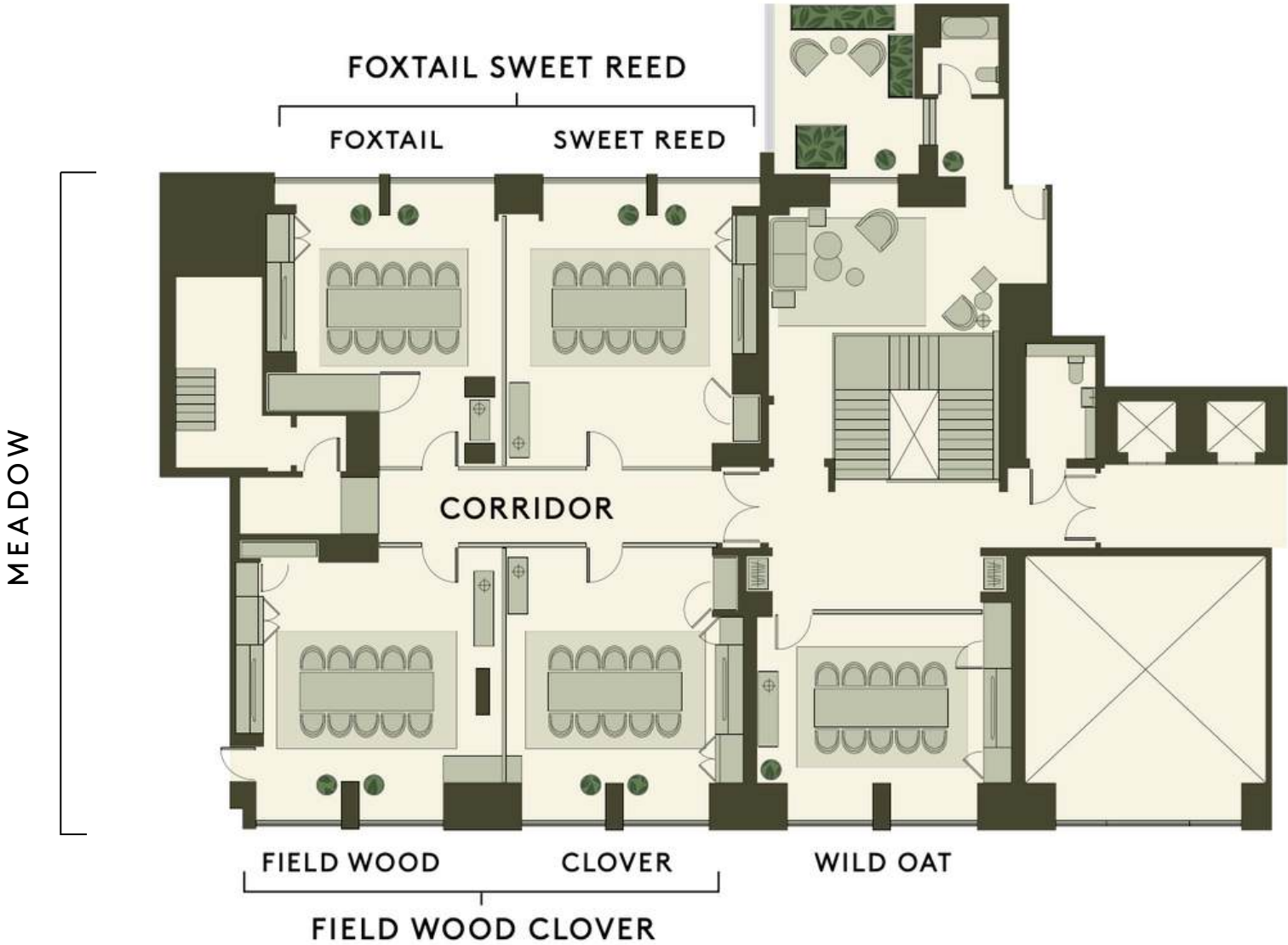
Our property features private spaces on the first floor that are integrated with a social area to gather during breaks, as well as before and after events. Inspired by nature, with thoughtful details of natural materials. Powered by technology, with sound systems and HD screens. From intimate gatherings for 8 up to 80 guests, discover your perfect space at 1 Hotel Mayfair.

MEADOW | FOXTAIL | SWEET REED | FIELD WOOD | CLOVER | WILD OAT

Meeting spaces are equipped with:

- Mounted Touch-Panel Control
- Audio Inputs (HDMI, 3.5 MM, RCA, USB)
- Multiple Power Outlets
- Surround sound
- 75" Samsung Screen with wireless clickshare connectivity

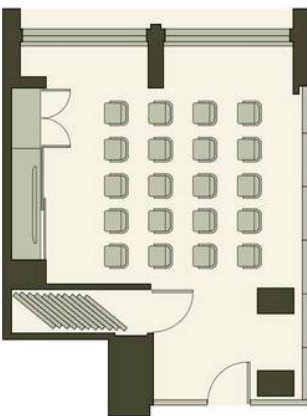
FLOORPLAN



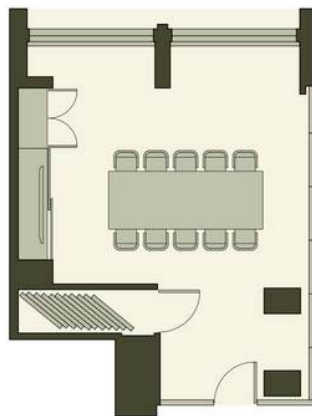
FOXTAIL



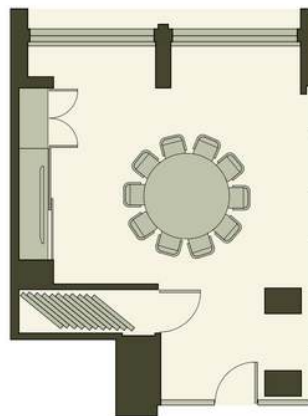
FOXTAIL THEATRE
20 GUESTS



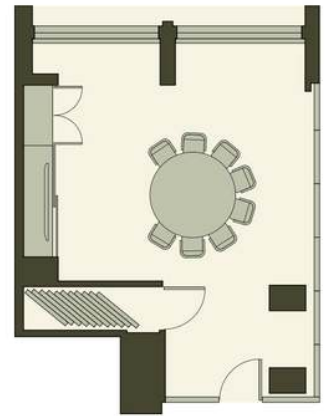
FOXTAIL BOARDROOM
10 GUESTS



FOXTAIL BANQUET
10 GUESTS



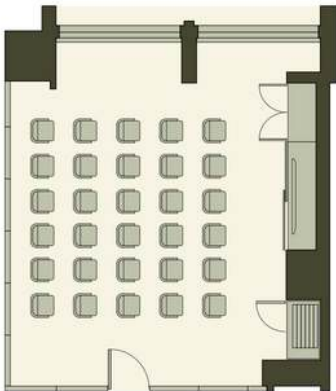
FOXTAIL CABARET
8 GUESTS



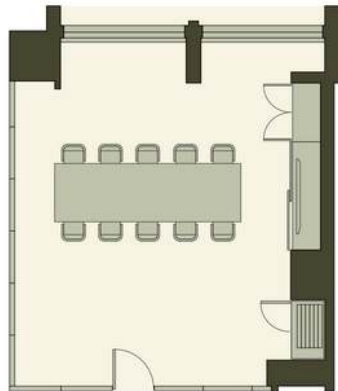
SWEET REED



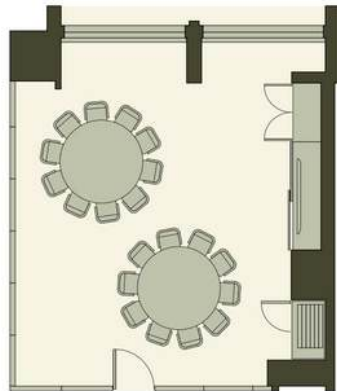
SWEET REED THEATRE
30 GUESTS



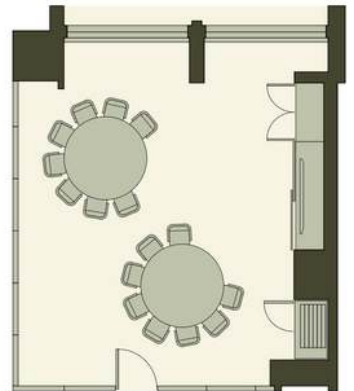
SWEET REED BOARDROOM
10 GUESTS



SWEET REED BANQUET
20 GUESTS



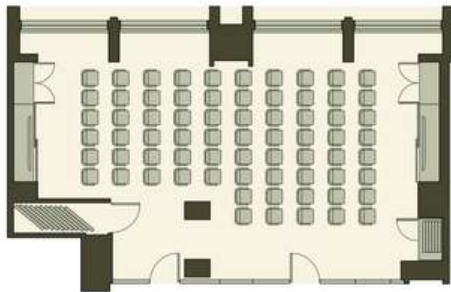
SWEET REED CABARET
16 GUESTS



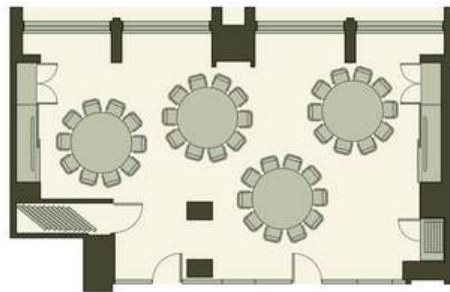
FOXTAIL SWEET REED



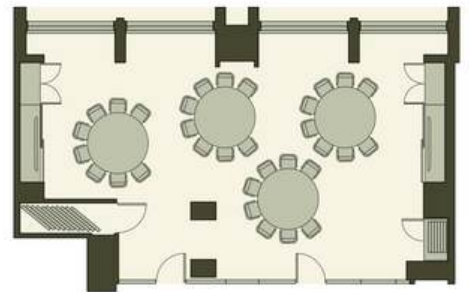
FOXTAIL SWEET REED THEATRE
70 GUESTS



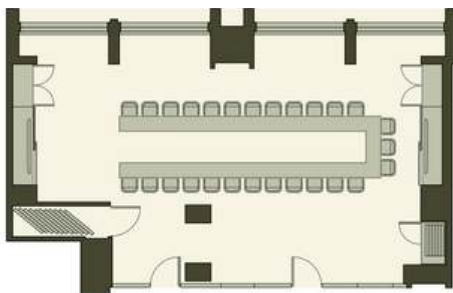
FOXTAIL SWEET REED BANQUET
4 ROUNDS OF 10 GUESTS EACH



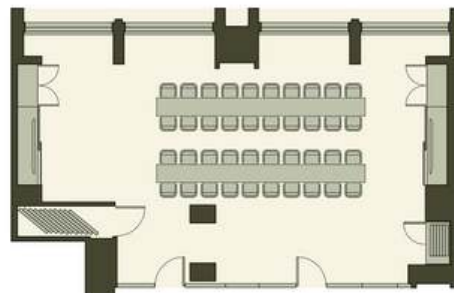
FOXTAIL SWEET REED CABARET
32 GUESTS



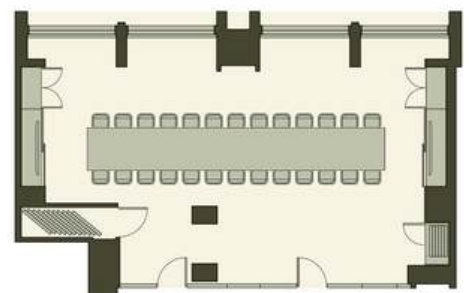
FOXTAIL SWEET REED U-SHAP
18 WITH 2 PER TABLE, 27 WITH 3 PER TABLE
HOLLOW SQUARE SIMILAR, WITH 2
OR 3 MORE GUESTS ON THE LEFT



FOXTAIL SWEET REED BOARDROOM
40 GUESTS



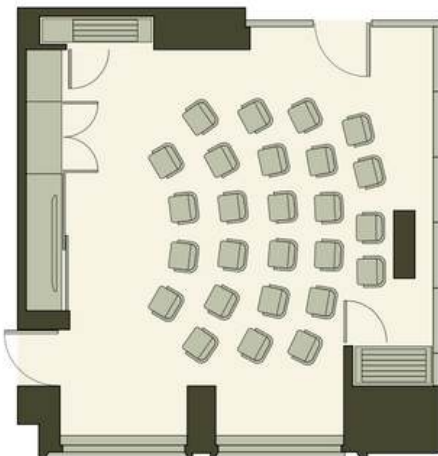
FOXTAIL SWEET REED BOARDROOM
26 GUESTS



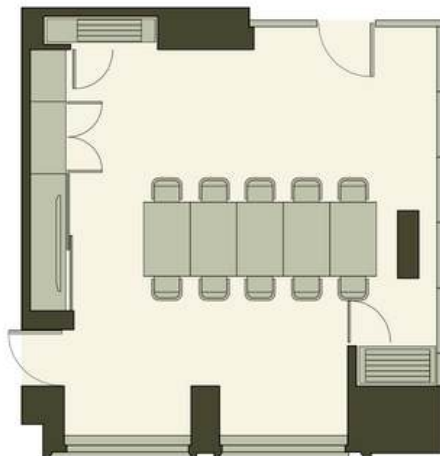
FIELD WOOD



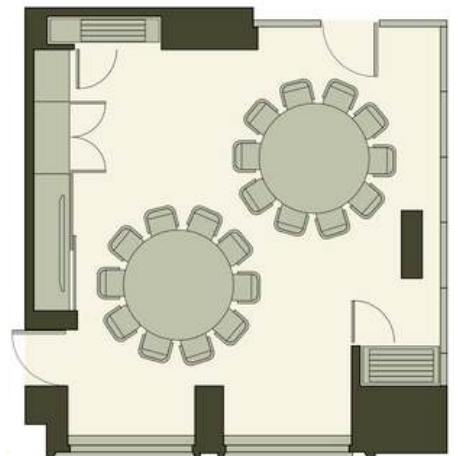
FIELD WOOD THEATRE
26 GUESTS



FIELD WOOD BOARDROOM
10 GUESTS



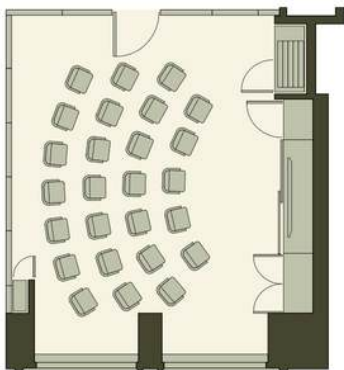
FIELD WOOD BANQUET
20 GUESTS



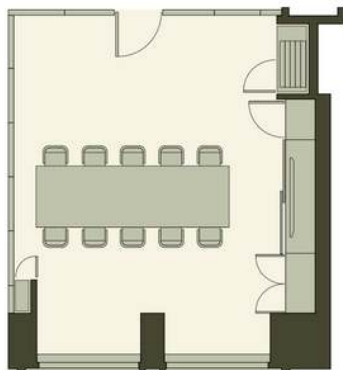
CLOVER



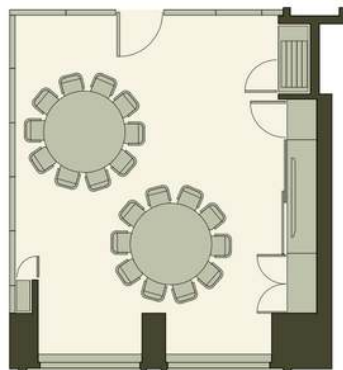
CLOVER THEATRE
26 GUESTS



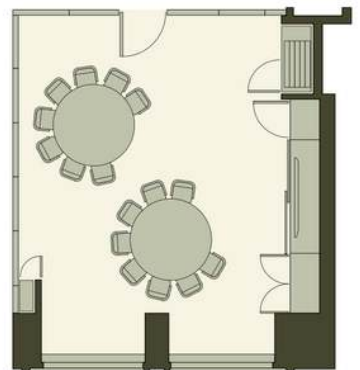
CLOVER BOARDROOM
10 GUESTS



CLOVER BANQUET
20 GUESTS



CLOVER CABARET
16 GUESTS



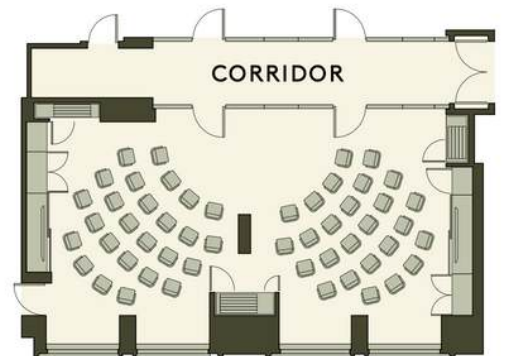
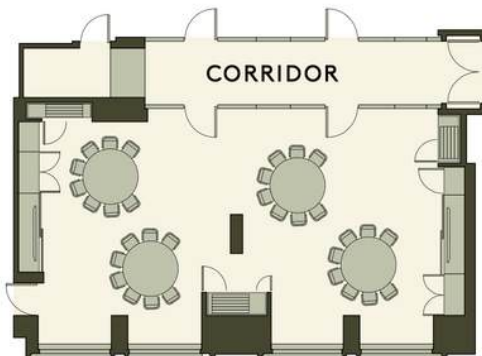
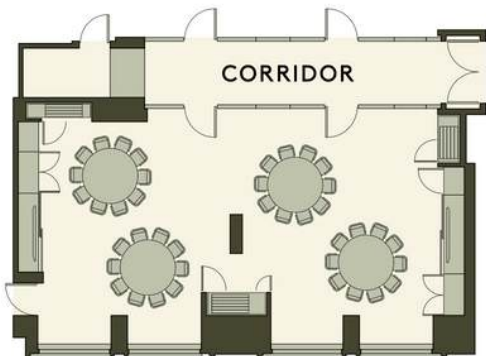
FIELD WOOD CLOVER



FIELD WOOD CLOVER BANQUET
5 ROUNDS OF 10 GUESTS EACH

FIELD WOOD CLOVER CABARET
32 GUESTS WITH FRONT PROJECTION

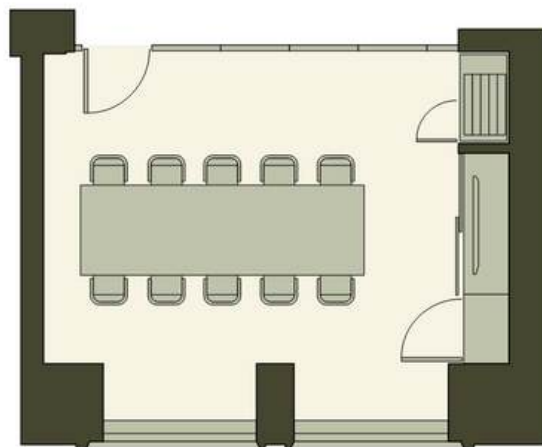
FIELD WOOD CLOVER THEATRE
52 GUESTS WITH FRONT PROJECTION



WILD OAT



WILD OAT BOARDROOM
10 GUESTS



MEADOW

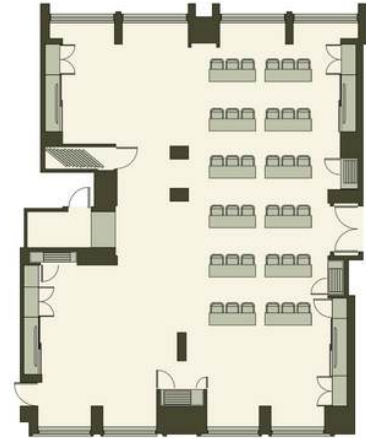
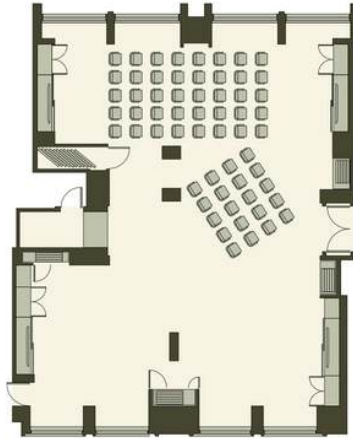


MEADOW

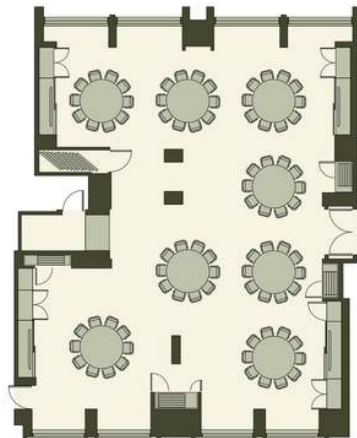
MEADOW THEATRE STYLE
80-100 GUESTS DEPENDING ON AV



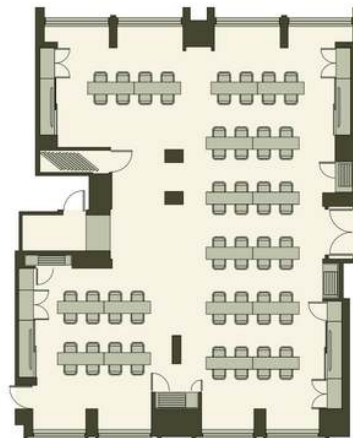
MEADOW CLASSROOM
24 WITH 2 PER TABLE, 36 WITH 3 PER TABLE



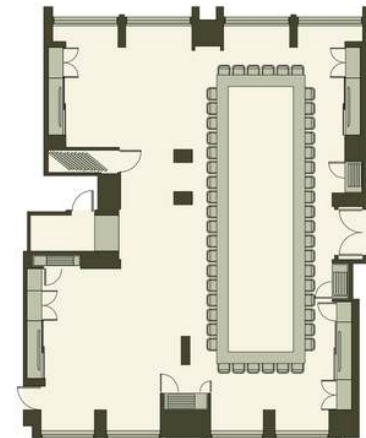
MEADOW BANQUET
8 TABLES OF 10 GUESTS EACH



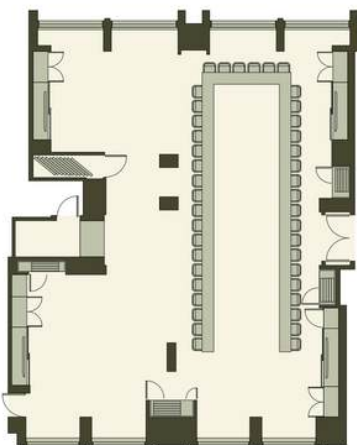
MEADOW BANQUET
9 TABLES OF 8 GUESTS EACH



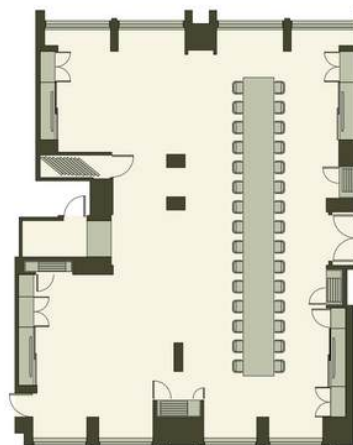
MEADOW HOLLOW SQUARE
32 WITH 2 PER TABLE, 48 WITH 3 PER TABLE



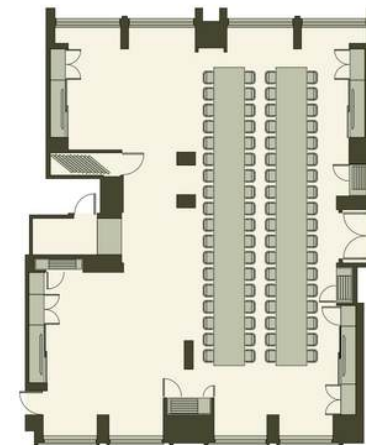
MEADOW U-SHAPE
28 WITH 2 PER TABLE, 42 WITH 3 PER TABLE



MEADOW BOARDROOM
30 GUESTS

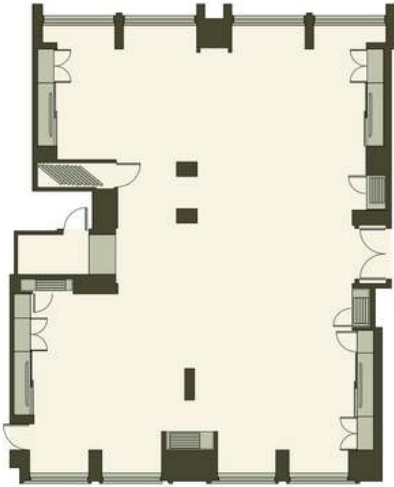


MEADOW BOARDROOM 2
72 GUESTS

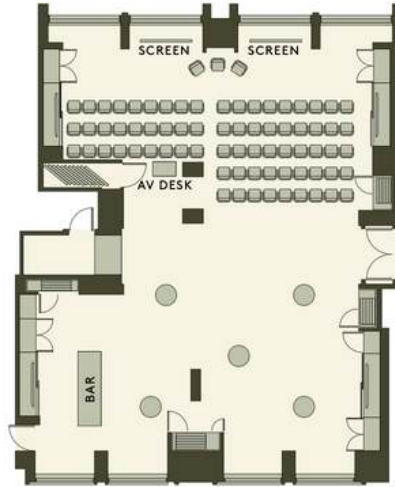


MEADOW

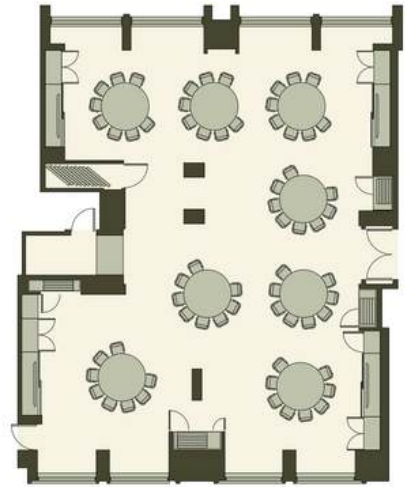
MEADOW RECEPTION
150 GUESTS



MEADOW THEATRE & RECEPTION
70 GUESTS



MEADOW CABARET
64 GUESTS WITH 8 PER TABLE, 8 TABLES



MEADOW BUSINESS FORUM 1
84 GUESTS



MEADOW BUSINESS FORUM 2
84 GUESTS





Dovetale



DOVETALE

Two Michelin-starred Chef Tom Sellers' Dovetale, is grounded in a deep respect for seasonal, organic and locally sourced ingredients creating reimagined European classics, showcased through produce-led menus.

From intimate private dinners and semi-private gatherings to fully private parties, Dovetale accommodates different layouts with an incredible atmosphere in the heart of Mayfair. Dovetale also includes an outdoor terrace with a hammered copper fireplace and pergola, perfect for intimate gatherings.

DOVETALE RESTAURANT AND TERRACE CAPACITIES

Seated: 90 pax (100 pax maximum)
Standing: 275 pax (furniture removed)

DOVETALE TERRACE CAPACITIES

Seated: 40 pax
Standing: 80 pax (furniture removed)

DOVETALE UPPER DECK

Seated: 28 pax



DOVETALE UPPER DECK

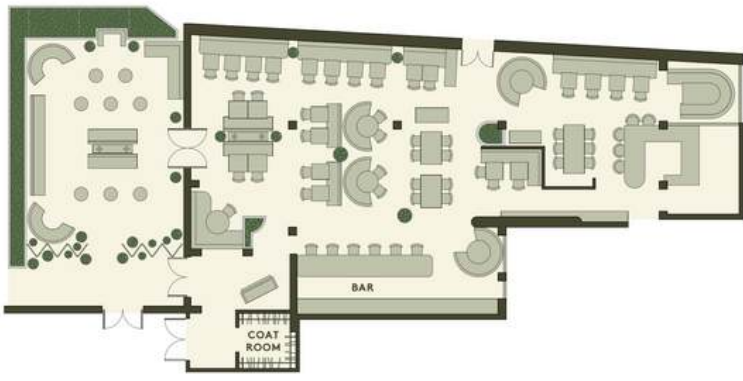


DOVETALE TERRACE

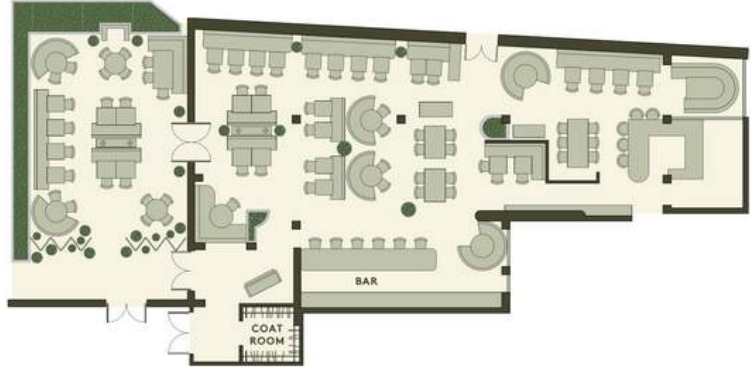


DOVETALE FLOORPLANS

DOVETALE RESTAURANT RECEPTION
100 GUESTS



DOVETALE RESTAURANT
275 GUESTS



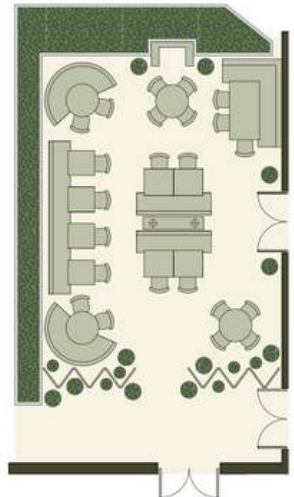
DOVETALE RESTAURANT DINNER
100 GUESTS



DOVETALE RESTAURANT STANDING RECEPTION
275 GUESTS



DOVETALE RESTAURANT TERRACE DINNER
40 GUESTS



DOVETALE RESTAURANT TERRACE RECEPTION
100 GUESTS



DOVETALE SHARING MENU

£75PP

Sourdough baguette & cultured butter

TO START

Made this morning Stracciatella, spring shoots & shrubs

Fried violet artichokes, tomato, fennel & bitter leaf

TO FOLLOW

BBQ Whole chipotle chicken, green slaw & grilled cornbread

Roast potato gnocchi, Cime di rapa, aged pecorino & pine nuts

SIDES

Wood-fired vegetables & Blackmount cheese

Dovetale fries

TO FINISH

English rhubarb custard tart

Madagascan vanilla, poached pears & pecan praline



DOVETALE SHARING MENU

£95PP

Sourdough baguette & cultured butter

TO START

Made this morning Stracciatella, spring shoots & shrubs

Tuna otoro, blood orange & red pepper

Carpaccio of English Wagyu, hot mustard, Old Winchester & beef fat chips

TO FOLLOW

Grilled Herdwick lamb cutlets, sheep's yoghurt & wild garlic

Grain-fed Lake District T-bone, bone marrow sauce

Roast potato gnocchi, Cime di rapa, aged pecorino & pine nuts

SIDES

Wood-fired vegetables & Blackmount cheese

Dovetale fries

Green herb salad

TO FINISH

English rhubarb custard tart

Madagascan vanilla, poached pears & pecan praline

Four Neal's Yard dairy British cheeses



DOVETALE SHARING MENU

£125PP

Sourdough baguette & cultured butter

TO START

Carpaccio of English Wagyu, hot mustard, Old Winchester & beef fat chips

Tuna otoro, blood orange & red pepper

Fried violet artichokes, tomato, fennel & bitter leaf

TO FOLLOW

Roast potato gnocchi, Cime di rapa, aged pecorino & pine nuts

Roast halibut tranche, leeks & whey butter

Grain-fed Lake District T-bone, bone marrow sauce

SIDES

Wood-fired vegetables & Blackmount cheese

Dovetale fries

Green herb salad


TO FINISH

English rhubarb custard tart

Madagascan vanilla, poached pears & pecan praline

Four Neal's Yard dairy British cheeses



A warm and inviting living room featuring a rustic stone fireplace with a fire burning. The room is furnished with orange leather sofas, a large dome-shaped pendant light, and a coffee table. The walls are a mix of stone and wood, and there are several potted plants throughout the space.

DOVER YARD



DOVER YARD

Escape to Dover Yard, an enchanting bar and lounge that seamlessly blends nature-inspired aesthetics with a captivating ambiance. Our Bar team's sustainable and conscious approach shines through the drink menu, offering refreshing and innovative cocktails crafted with natural, locally sourced ingredients.

Located in the heart of the hotel, Dover Yard overlooks a lush botanical courtyard, providing a serene oasis for breakfast events, panel talks or receptions.

DOVER YARD CAPACITIES

Standing: 150-175 pax

DOVER YARD PANEL TALKS

Seated: 30-40 pax

DOVER YARD UPPER DECK

Standing: 50 pax

DOVER YARD PANEL TALKS

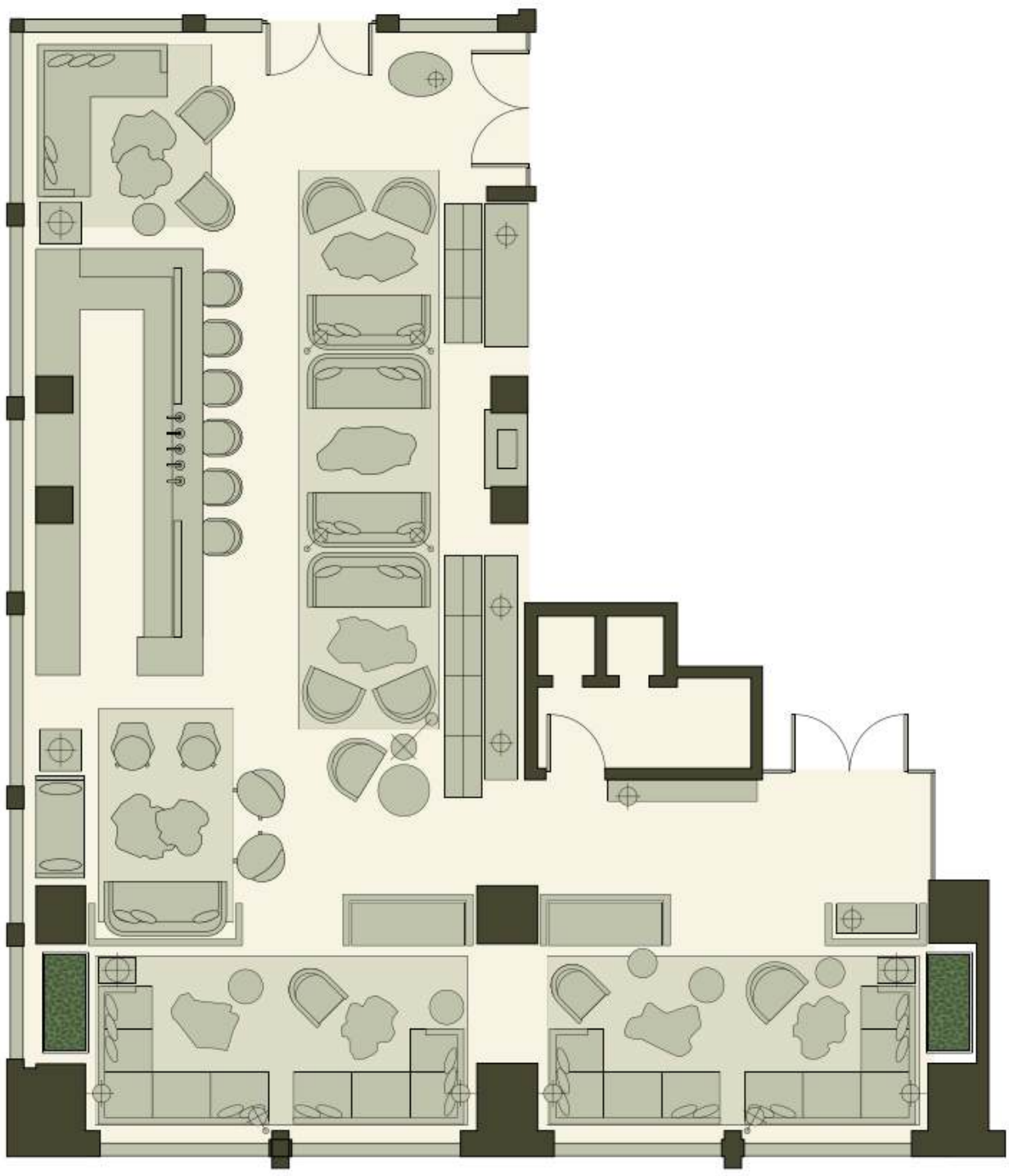


DOVER YARD UPPER DECK





DOVER YARD FLOORPLAN



NIGHTINGALE

NIGHTINGALE





NIGHTINGALE

Introducing Nightingale, a modern European-inspired café in the heart of Mayfair. Nightingale is located at 3 Dover Yard with an indoor-outdoor space perfect for lunch, mid-week cocktails or hosting your next private dinner party and event.

NIGHTINGALE CAPACITIES

- Seated on 1 x table: 22 pax
- Seated on 3 x separate tables: 30 pax
- Standing Inside only: 45 pax
- Standing Inside & Outside: 60 pax



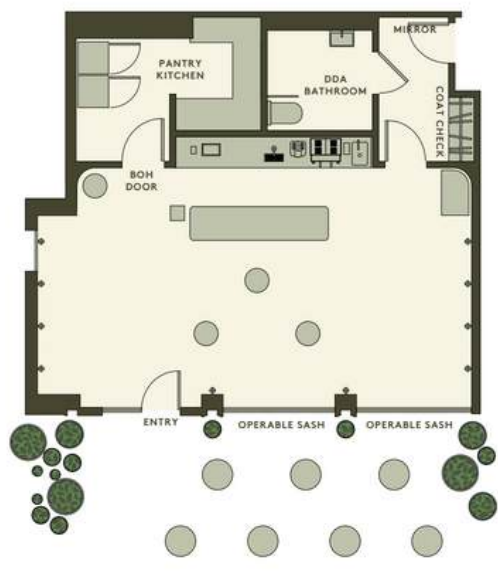
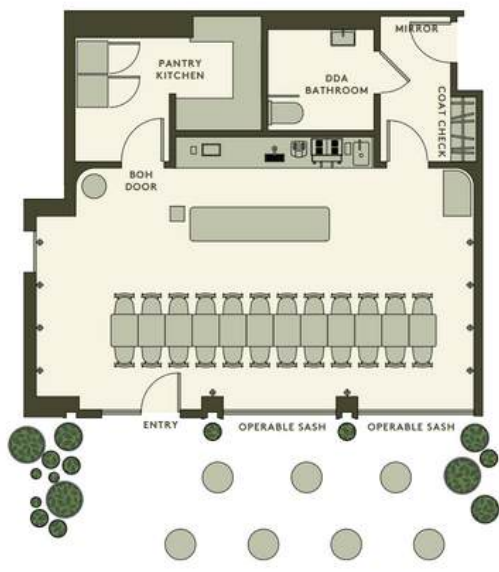
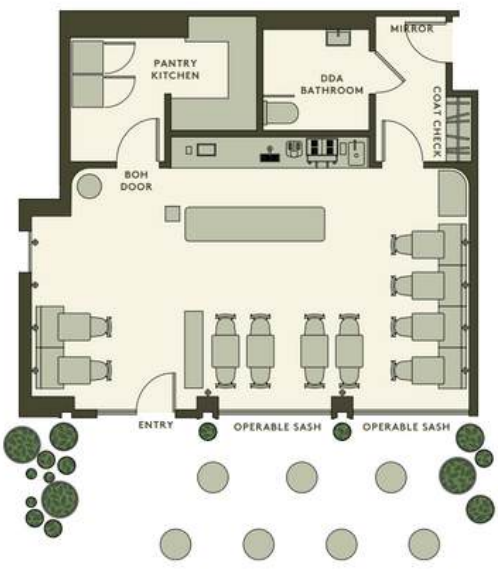


NIGHTINGALE FLOORPLANS

NIGHTINGALE

NIGHTINGALE PRIVATE DINING
24 GUESTS

NIGHTINGALE RECEPTION
24 GUESTS





SIGNATURE SUITES
FOR EVENTS



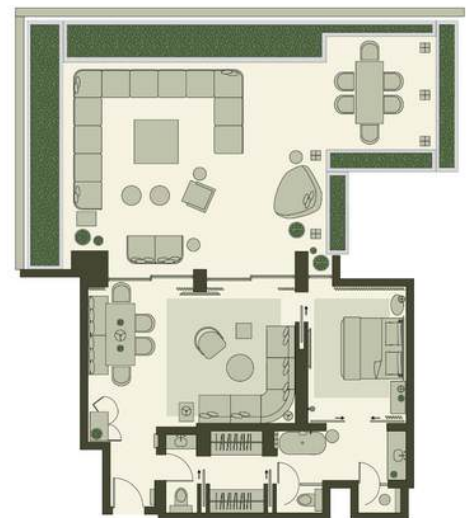
GARDEN TERRACE SUITE

See the city in a new light from your 102 sq.m outdoor terrace space on the hotel's 7th floor, featuring a dining table for six and sofa seating for 10.

SIZE: 1873 SQ.FT. | 174 SQ.M.

Capacity Inside: Up to 15 Standing

Outside: Up to 40 Standing



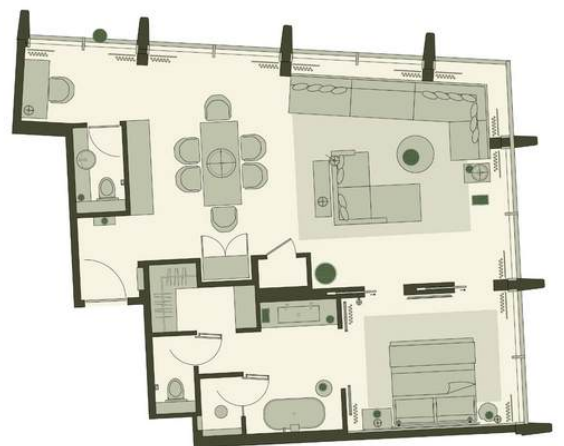


PICCADILLY GREENHOUSE SUITE

Plan your perfect event in this greenhouse getaway boasting panoramic skyline views of Green Park, Big Ben, Palace of Westminster and Piccadilly from the hotel's 8th floor. Floor to ceiling windows ensure a light-filled indoor dining area with a table for six, and a comfy corner sofa for relaxing.

SIZE: 883 SQ.FT. | 82 SQ.M.

Capacity Inside: Up to 30 Standing



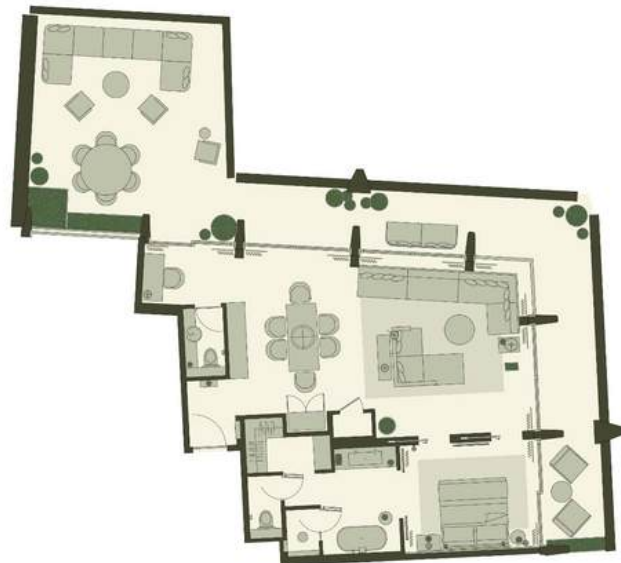


DOVER TERRACE SUITE

Take in sweeping skyline views from your 56.5 sq.m wrap-around terrace. On the inside, a host's dream with a handcrafted wooden dining table, spacious sofa, and floor to ceiling windows.

SIZE: 1528 SQ.FT. | 142 SQ.M.

Capacity Inside: Up to 30 Standing





GREEN PARK PENTHOUSE

Mayfair's largest penthouse is a haven for hosting. Imagined as a garden room due to its prime position overlooking Green Park, this Penthouse Suite is a showstopper. Inspired by the tonal palette of the park, the suite applies natural textures to bring drama and play with light and shade. The double height living area and wrap-around terrace invite you to admire expansive views of Green Park and the city skyline. On the inside, luxurious features such as the two-sided fireplace, live textured tree stump bar, raw timber dining table that bring the calming powers of nature into your space.

SIZE: 2949 SQ.FT. | 274 SQ.M.

Standing Inside only: 60 pax

Seated on 1 x table: 26 pax

(Bespoke plated menus will be created for any private lunch or dinner in the Penthouse)

GREEN PARK PENTHOUSE

